



1. Power Button;
2. Reset(R) Button;

Note:

Power Button: On-Power on; Off-Power off.

Reset (R) Button: Press and hold for 5 seconds, then release to reset the device to factory settings.

LED Status Indicators:

Local mode: Red light flashes; blue light stays off.

Remote Mode (Connecting): Blue light flashes.

Remote Mode (Connected): Blue light stays on.

Charging:

Green light on = Charging in progress.

Green light off = Fully charged.

One:Download the APP.

There are two ways to download the APP.

- 1: Scan the QR code below to download " StarEye " (available on iOS/Android)



- 2: iPhone users: Find the app in the App Store.

Android users: Download it from Google Play or other app stores.


Two. Connection steps

1. Open the app, register and log in.

2.Tap "Add device" → "AP Connection" → "Next Step (Check the device has been reset)" ->Go Connect ->Access your phone's Settings menu, select the "WLAN" function page and connect to the device hotspot (e.g. AYS-XXXXXX-XXXX).

Note: If there's no QR code, choose "Connect your phone to WiFi signal from device".

Add device >



Equipment Distribution Network Tutorial

Add device

Add device

- Bluetooth connection**
Add a camera that supports Bluetooth distribution network >
- 4G Scan Code Connection**
Add a camera connected to the network using a 4G card >
- AP Connection**
Connect devices using AP hotspot >

Add Camera



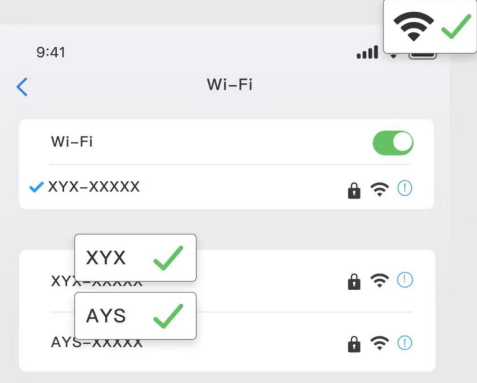
Please reset the device

Please power on the device first
 Low power devices need to be turned on and off again
 Long press the reset button for about 8 seconds until the device's red and blue lights turn off
 The device red light lights up again and

✓ Resetted device

Next step

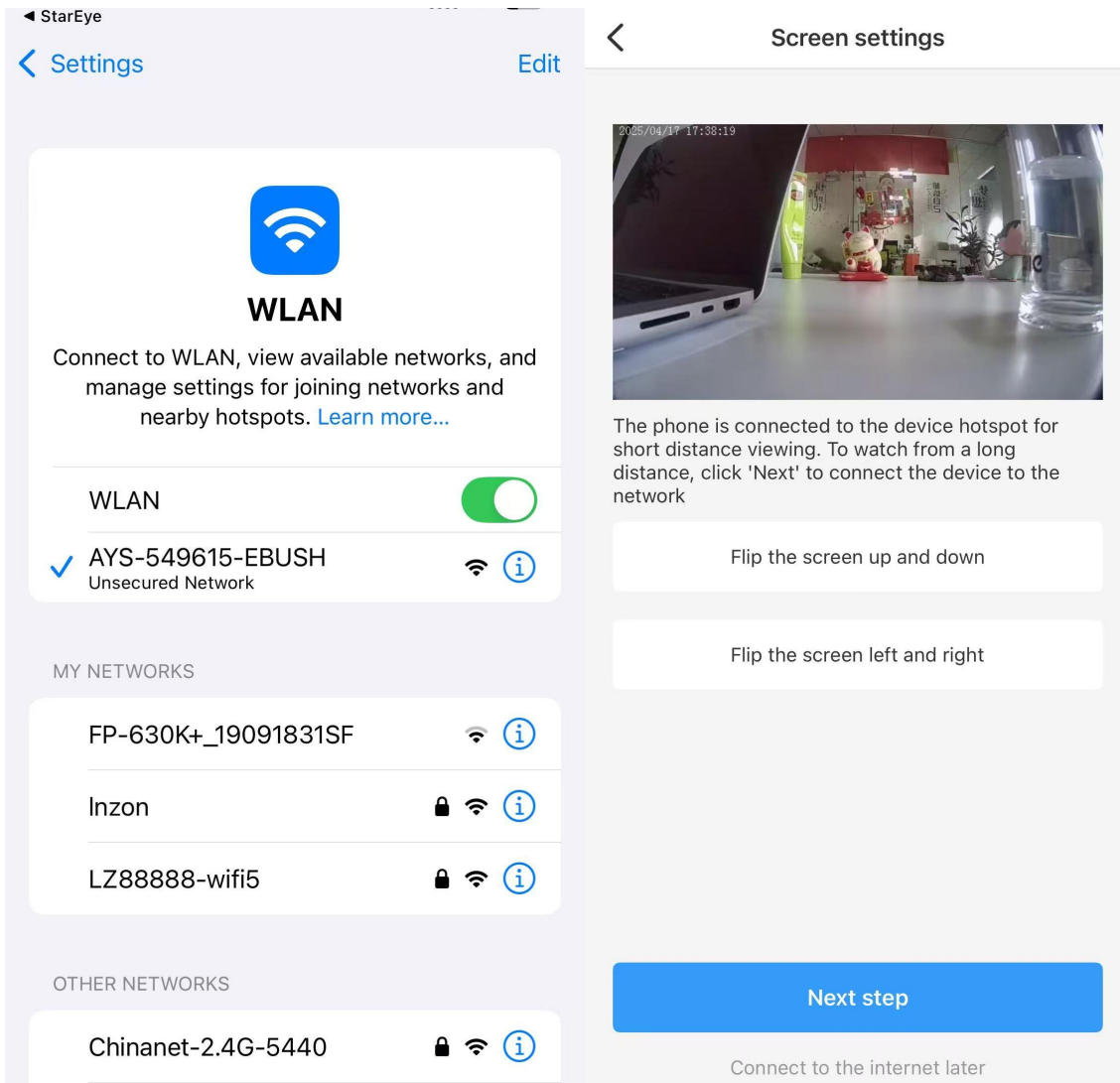
Manually configuring network



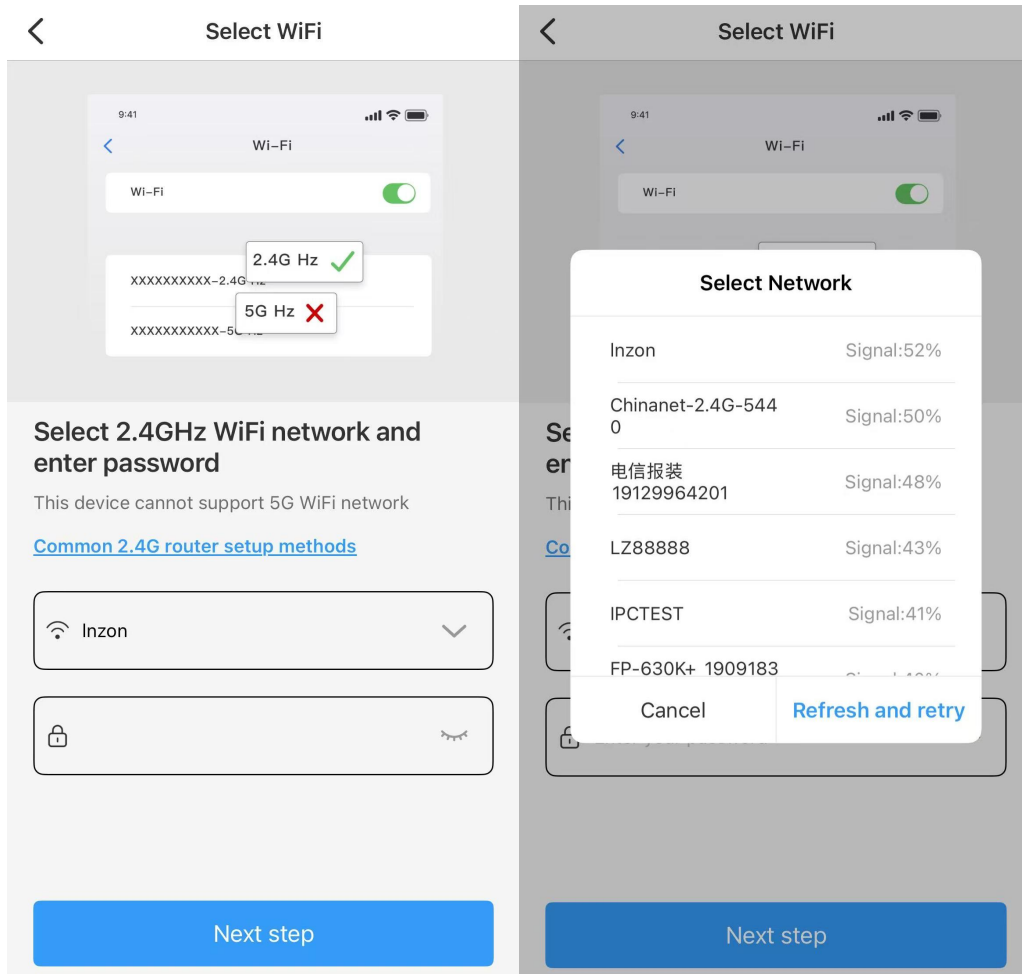
Failure to enable [Location permission](#) will result in device network access failure

- Click the link button below
- Select networks starting with [XYX] or [AYS] on the WiFi settings page
- Return to APP

Go connect



Return to the app, on the "Screen settings" page, tap "Next step" to enter the "Select Network" page. Select the corresponding network, "In the pop-up list, find your target Wi-Fi name (e.g., Inzon)." and tap Next step. The device will automatically connect to the network.



After two minutes, the device will connect to the network. If you entered the wrong password during setup, the device will restart normally but won't connect successfully. You can reset the device to factory settings by pressing and holding the "R" button for 5 seconds, then releasing it. This will return the device to local mode.

Repeat the setup process starting from step "1".

Notes:

1. Make sure to select the 2.4G hotspot of your router, not the 5G hotspot.
2. For best results, use only numbers and letters in your router's name (no special characters).

Notes:

1. Network Name Requirements:

Use only numbers and letters in your router name. Avoid special characters like ".", "_", "-", or "/"

2. Device Offline Troubleshooting:

In Local Mode:

You may not be connected to the device's hotspot

In Remote Mode:

- 1) Verify you entered the correct WiFi password
- 2) Check that neither network name nor password contain special characters. Recommended: Keep WiFi

password under 11 characters

3) Ensure device is within 5 meters (16 feet) of router for best connection

3. Camera Login Credentials:

Default password: 6666

Forgot credentials? Factory reset will restore default username and password

4. Factory Reset Instructions:

Press and hold the reset button for about 5 seconds. Release when the camera restarts

This will restore all default settings